



Gwaii Haanas

'Laanaay 'waadluxan Tilga Kaaganda,  
Tang.gwan 'Laanaay 'waadluxan  
Kaaganda, ad Xaaydas Giinaa.ah 'Laana

Gwaii Haanas

National Park Reserve, National  
Marine Conservation Area Reserve,  
and Haida Heritage Site

Réserve de parc national, réserve  
d'aire marine nationale de conservation  
et site du patrimoine haïda

Gwaii Haanas

# GWAII HAANAS VISITOR GUIDE

Canada



HAIDA NATION



**EXPLORE**  
LAND. SEA. PEOPLE.





**Yahguudang—Respect**  
Linang - Herring

Haida ways of being are rooted in the principles of respect and responsibility and we ask that all who travel through Gwaii Haanas respect each other and the place. Please do your part by following the rules and guidelines outlined in this book.

**To welcome you and highlight how you can help protect this special place, an orientation session is required before visiting Gwaii Haanas.**



## WELCOME TO **GWAII HAANAS**

Gwaii Haanas National Park Reserve, National Marine Conservation Area Reserve, and Haida Heritage Site is a place of contrasts: of open seas and calm, secluded bays; of fierce storms and perfect summer days. It is a place where you can encounter a world unlike any other.

The lives of the Haida have always been intertwined with this remarkable place. Haida communities thrive on the abundance of resources from the sea, sky, and land, and these realms also provide immeasurable cultural and spiritual sustenance. Because of this deep connection and responsibility to protect the land, the Haida Nation led the successful effort to stop logging in the area now called Gwaii Haanas.

Today, the Council of the Haida Nation and the Government of Canada manage Gwaii Haanas together through the Archipelago Management Board. This consensus-based board is comprised of equal representation from the Haida Nation and the Government of Canada, and is held up as a model of cooperative management around the world.

Gwaii Haanas is designated a Haida Heritage Site by the Haida Nation and a National Park Reserve and a National Marine Conservation Area Reserve by the Government of Canada.

It is our responsibility to treat Gwaii Haanas with the care it deserves, so future generations can experience its richness and beauty.

## GUIDING PRINCIPLES

**Xaaydas Giinaa.ah**  
*Haida Ways of Being*

### Gwaii Haanas Guiding Principles

Behind all management decisions and our day-to-day work, are six guiding principles which are based on values and ethics from Haida law. Each principle is represented by an accompanying illustration done by local Haida artist Iljuuwaas.



#### **Yahguudang — Respect.**

We respect each other and all living things. We take only what we need, we give thanks, and we acknowledge those who behave accordingly.



#### **'Laa guu ga kanhlins — Responsibility.**

We accept the responsibility to manage and care for the land and sea together. We work with others to ensure that the natural and cultural heritage of Gwaii Haanas is passed on to future generations.



#### **Gina 'waadluxan gud ad kwaagid — Interconnectedness.**

Everything depends on everything else. Healthy ecosystems sustain culture, communities and an abundant diversity of life, for generations to come.



#### **Giid tljuus — Balance.**

The world is as sharp as the edge of a knife. Balance is needed in our interactions with the natural world. Care must be taken to avoid reaching a point of no return and to restore balance where it has been lost. All practices in Gwaii Haanas must be sustainable.



#### **Gina k'aadang.nga gii uu tll k'anguudang — Seeking Wise Counsel.**

Haida elders teach about traditional ways and how to work in harmony with the natural world. Like the forests, the roots of all people are intertwined. Together we consider new ideas, traditional knowledge and scientific information that allow us to respond to change in keeping with culture, values and laws.



#### **Isda ad dii gii isda — Giving and Receiving.**

Reciprocity is an essential practice for interactions with each other and the natural and spiritual worlds. We continually give thanks for the gifts that we receive.

# THE HAIDA GWAII WATCHMEN



Gwaii Haanas provides an incredible opportunity to explore Haida ancestral village sites and interact with Haida citizens who work as Haida Gwaii Watchmen from May to September.

The Council of the Haida Nation welcomes you and asks that you travel with yahguudang *respect* and care to honour the deep Haida connection to the land, sea and sky.



## HAIDA GWAII WATCHMEN PROGRAM HISTORY

In the 1980s, as the number of visitors to ancestral village sites increased, Haida citizens became increasingly concerned about these sites and the cultural heritage found there. The Haida Gwaii Watchmen Program began in 1981 as a volunteer program. Today, the Watchmen Program is managed by the Council of the Haida Nation and works closely with Parks Canada, which has provided financial and logistical support since 1990.

Two to four Watchmen live at each site and serve as guardians to protect the natural and cultural heritage of the villages.

© Ijjuwaas



Giid tljjuus - Balance  
Gaaluuhlkyan - Abalone

## HOW TO VISIT

The Haida Gwaii Watchmen's ability to protect the natural and cultural heritage of the sites depends on the cooperation of visitors. You can help by observing the following protocols:

**Please radio ahead on Marine VHF Channel 6 before you arrive, to ask the Watchmen for permission to land.**

- Ensure that there are no more than 12 people ashore at a time or within sight or sound of other groups.
- Access to the sites is on a first come, first served basis.
- Stay on the trails - cultural remains such as poles and longhouses are in fragile condition and can be easily damaged.
- All visits must end by 6pm with the last group arriving no later than 4pm.
- Camping is not allowed at any of the Haida Gwaii Watchmen sites except safe harbour at Hlk'yah Gawga *Windy Bay*.
- Cannabis and alcohol are not permitted at Watchmen sites.
- With the exception of service animals, pets are not permitted at Watchmen sites.
- No video recording of the Watchmen
- Ask permission first if you wish to photograph the Watchmen.
- All for-profit photography, videography, influence and media work must be done with a Gwaii Haanas media permit. Media/Film permit applications need to be sent in at least four weeks ahead. Permits are approved by the Archipelago Management Board.



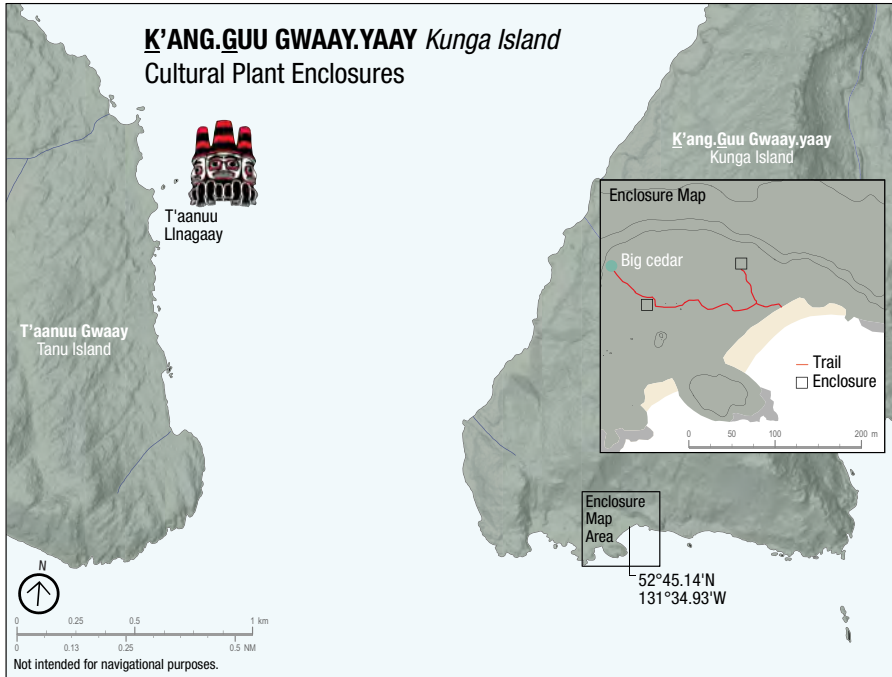
## WATCHMEN SITES

**Sg̃ang Gwaay Anthony Island**  
**UNESCO World Heritage Site:**  
**52°05.90'N, 131°13.0'W**

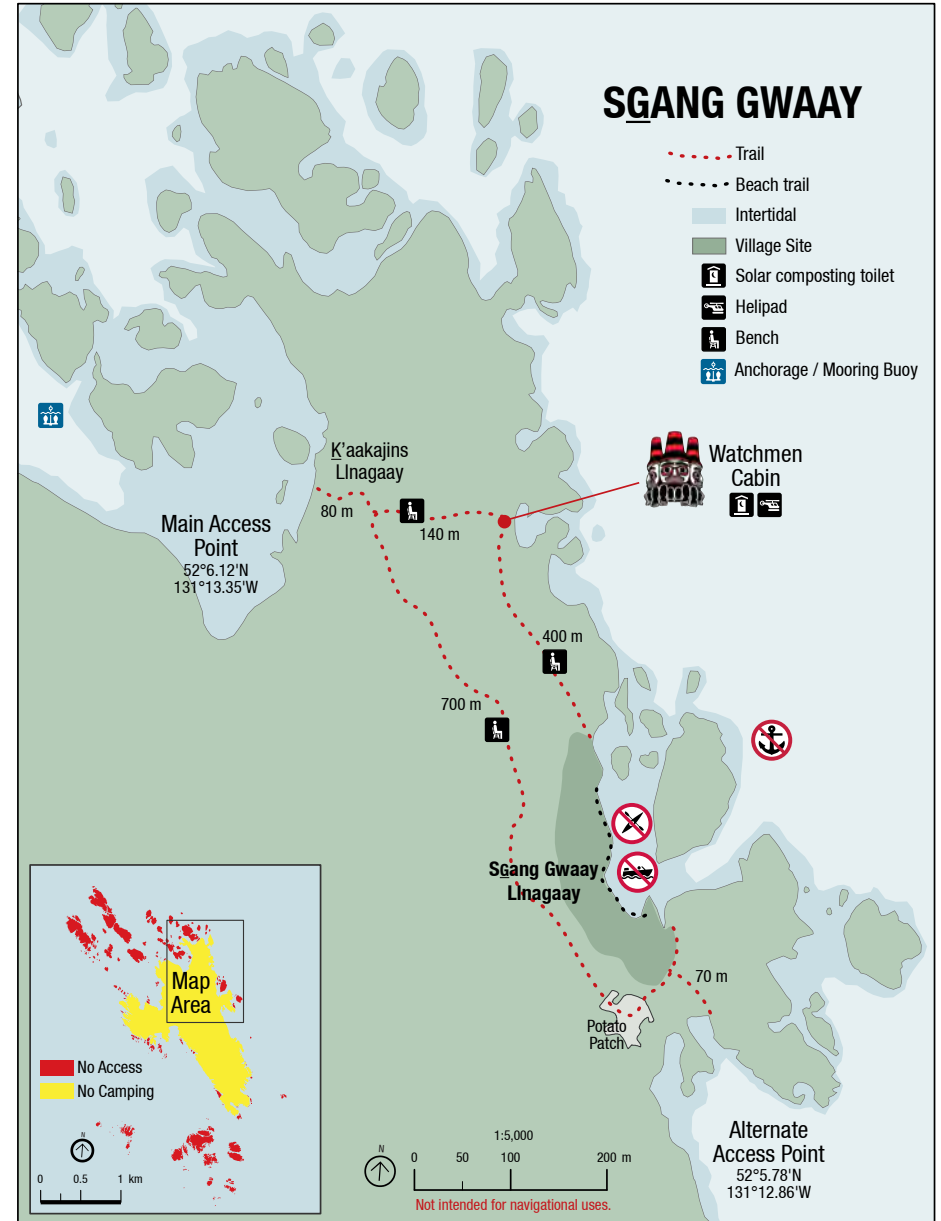
Sg̃ang Gwaay is on the exposed southwest coast of Gwaii Haanas. The ancestral village, Sg̃ang Gwaay Llnagaay, is located in a sheltered bay on the east side of the island. Here, human occupation is evident and visible in the forms of midden sites, upright and fallen poles, house pits, and standing posts and beams of longhouses. It represents one of the best examples in the world of a traditional Northwest Coast First Nations village. In 1981, Sg̃ang Gwaay was declared a UNESCO World Heritage Site as well as a National Historic Site.

Sg̃ang Gwaay is a globally-significant seabird nesting area, and most species nest in burrows underground. By staying on the trail, you reduce the possibility of trampling a burrow and contribute to seabird nesting success.

Please refer to the Sg̃ang Gwaay map on page 15 for locations of access points to come ashore. Note that the main access is on the northeast corner of the island and the alternate access is the bay south of the village site. Please do not anchor in front of the village site nor come ashore directly at the village site.



We invite you to **K'ang.Guu Gwaay.yaay *Kunga Island***. Follow the yellow trail markers and discover the cultural plant enclosures at this site. Originally built in the 1990s to study the effects of introduced deer on the forest, these two enclosures were rebuilt in 2023. Here medicinal plants, shrubs, and young trees can flourish without being eaten by deer. As you walk through the forest and visit the enclosures, pause, look, and listen. Walk carefully; the route is marked but this is not a maintained trail.



## WATCHMEN SITES

**Gandll K'in Gwaay.yaay  
Hotspring Island:  
52°34.50'N, 131°26.50'W**

Gandll K'in Gwaay.yaay translates to Hotwater Island and provides waters that comfort, heal and nourish body and soul. You can enjoy the relaxing and healing benefits of the springs. The thermal system that gives the island its name warms the thin soils and keeps the forests at bay.

**HIK'yah Gawga Windy Bay:  
52°41.41'N, 131°27.30'W**

HIK'yah Gawga translates to Peregrine Falcon Bay and was one of the sites where Haida protested the logging on Lyell Island. Construction of *Looking Around and Blinking House* was part of the protest effort. The Haida Nation took a stand on the logging road at Sedgwick Bay in 1985. This action ultimately led to the establishment of Gwaii Haanas as a cooperatively managed protected area.

In August 2013, visitors, volunteers, Haida citizens, and Parks Canada staff raised the Legacy Pole at Windy Bay—the first monumental pole raised in Gwaii Haanas in 130 years! The pole honours the 20th anniversary of cooperative management between the Council of the Haida Nation and the Government of Canada.

**T'aanuu Llnagaay Tanu:  
52°45.90'N, 131°36.90'W**

T'aanuu Llnagaay translates to Eelgrass Town, which refers to the eelgrass beds found nearby. At one time, there were 25 to 40 longhouses in the village, which is located on the eastern side of Tanu Island. At the direction of the Hereditary Chiefs Council, the remains of cedar longhouses and memorial poles found here are following their natural life cycle and returning to the earth.

**K'uuna Llnagaay Skedans:  
52°57.90'N, 131°36.40'W**

K'uuna Llnagaay translates to On The Edge Town and is located on the northeast corner of Louise Island. At its peak, the village had 26 to 30 longhouses. In the late 1800s, more than 50 pieces of monumental sculpture were recorded at K'uuna Llnagaay. Today, a few carved memorial and mortuary poles remain standing and the depressions of several longhouses give a sense of scale.



© Ijluuwaas

'Laa guu ga kanhllns—Responsibility  
Səin Xaana - Ancient Murrelet



# SAFETY

Gwaii Haanas is a remote area. Visiting requires careful planning and an adventurous, respectful spirit.

- **A marine VHF radio is essential to receive updated weather forecasts, to call for help in case of emergency, and to contact the Haida Gwaii Watchmen to visit Watchmen Sites.**
- **There is no cell service in Gwaii Haanas. Consider carrying a satellite phone and/or an Emergency Positions Indicating Radio Beacon (EPIRB) or Personal Locator Beacon (PLB) as additional communication devices.**
- Make a safety plan and discuss it with your group before you go, and again when you arrive in Gwaii Haanas. Your daily plan should include an alternate route and alternate camping/mooring locations in case the weather deteriorates.
- Leave your safety plan with your emergency contact including your entry/exit dates and anticipated route of travel.
- You are travelling in a truly remote part of the west coast. All travellers must be prepared to deal with emergencies. There is no guarantee of a quick rescue.
- Be prepared for changing weather conditions and be prepared for natural hazards.
- Bring enough fuel for your entire trip. There are no fuel facilities or services anywhere in Gwaii Haanas. Caching fuel or supplies is not permitted.

# HOW TO GET HELP IN AN EMERGENCY

Canadian Coast Guard VHF radio Channel 16

Joint Rescue Coordination Centre 001-250-363-6611

Parks Canada Emergency Dispatch 001-780-852-3100

Gwaii Haanas staff and Haida Gwaii Watchmen VHF radio Channel 6

## MAYDAY

If you are in grave and imminent danger (if your life is in danger or your vessel is in danger of sinking), put out a distress call on Marine VHF radio Channel 16. This is the most rapid means of gaining assistance in a life-threatening emergency.

### Say the following over the radio:

- 1) MAYDAY, MAYDAY, MAYDAY.
- 2) "This is \_\_\_(your name) and (call sign of the vessel in distress)\_\_\_ (Repeat 3 times)."
- 3) Follow up again as soon as possible with:
  - MAYDAY again
  - Vessel call sign
  - Vessel position
  - Type of emergency (sinking, flooding, fire, etc.) or medical emergency
  - Number of people on board
  - Any injuries

**Keep repeating the distress call until you get an answer. When the emergency is over, the vessel that was in distress or the station that controlled the distress traffic must transmit a message addressed to "All Stations" advising that the distress traffic has ended.**

### Pan Pan

This is used if the station calling has a very urgent message concerning the safety of a ship, aircraft, other vehicle, or person.

### If you require assistance seek help as follows:

- Contact the Canadian Coast Guard on Marine VHF Channel 16 or by sat phone 1 250-413-8933 (Rescue Centre). Stay on the channel for an answer. If you don't get a response in 15 to 20 seconds, try again.

### If you have an emergency while on land contact:

- Parks Canada Emergency Dispatch via satellite phone at 001-780-852-3100
- Assistance can also be obtained by contacting Haida Gwaii Watchmen on Marine Radio VHF channel 6. They can contact Gwaii Haanas staff or the Canadian Coast Guard on your behalf. Or in critical emergencies use your EPIRB or PLB.
- Radio reception can be unreliable in Gwaii Haanas. If your radio is not receiving, try moving to a different, preferably higher, location and ensure your antenna is pointing toward the sky.
- Other international distress signals that can be used to draw attention are:
  - Flares and/or smoke signals.
  - Use a fog-horn. Sound the device continuously.
  - Use any standout behaviour such as waving a bright t-shirt on a paddle, like a flag.

## NATURAL HAZARDS ARE PART OF THE GWAII HAANAS EXPERIENCE



To reduce your chance of injury, be prepared for:

- **Slippery rocks, logs, docks, boardwalks, and sea vegetation.**
- **Rough waters:** Due to swell, chop, tide, current, and wind that can occur anytime, anywhere.
- **Submerged objects,** including uncharted rocks that can be hidden under the surface at higher tides.
- **Deadheads:** Floating or partially submerged water-soaked logs can be a common hazard especially after big tides.
- **Hypothermia:** A serious medical emergency that can occur from immersion in the water or prolonged exposure to cold/wet conditions.
- **No Shellfish Harvest:** There is no harvesting of bivalve shellfish (clams, scallops, cockles, etc.) in Gwaii Haanas. Gwaii Haanas waters experience periodic red tides. Some red tides produce a toxin which accumulates in shellfish and causes shellfish poisoning in humans. Gwaii Haanas does not test waters for this toxin and the area is closed to bivalve harvest.
- **Bear encounters:** You must hang all food, toiletries and other wildlife attractants to avoid encounters with bears. Use caution around salmon streams in the fall.
- **Falling branches, blow-downs, snags, and widow-makers.**
- **Landslides and rockfalls.**

- **Dangerous goods:** that wash onto shore as marine debris, including compressed gas cylinders, fuel barrels, military ordinances, and containers with unidentified contents. **Do not touch. Report to: Parks Canada Emergency Dispatch via satellite phone at 001-780-852-3100**
- **Earthquakes and tsunamis.**

### What to do in case of an earthquake:



Remember to bring your emergency supplies, including a radio, with you to higher ground. Monitor Marine Channel 16 for updates.



## MOORING BUOYS AND CLOTHESLINES

Moorings and boat clotheslines are only in place at the Watchmen sites (5-ton) and Huxley Island (2-ton). Please get permission from Watchmen before using any of the moorings or clotheslines.

\*Note for mooring buoys: Use the rope tag line to moor your vessel. Do not tie to the eye on the top of the buoy.

## WATER

- Fresh water can be collected from streams or from one of two water hoses.
- Please be aware weather or environmental impacts can cause service disruptions to water lines. Please have alternate plans if not available.
- Purify all drinking water before use as all water is not potable.
- In drier weather, small streams dry up. Fill your water containers whenever you have the opportunity.

**Shuttle Island (water)**  
52°39.95'N, 131°43.75'W

**Louscoone Inlet (water)**  
52°11.64'N, 131°15.37'W

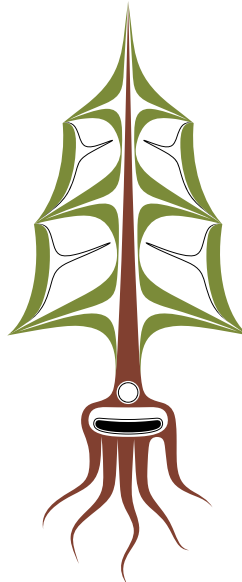
## HELIPADS

Helicopter access is only permitted for emergency or management purposes. In the event that you are involved in a medical evacuation, you may be directed to a helicopter pad at one of the following locations:

**Powrivco Bay**  
52°41.21'N, 131°33.69'W

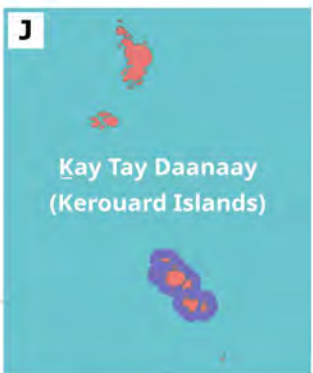
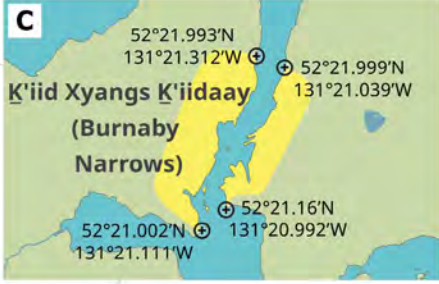
**Jedway**  
52°18.34'N, 131°13.39'W

**Sgang Gwaay**  
52°06.09'N, 131°13.09'W



© Ijluuwaas

Isda ad dii gii isda—Giving and Receiving  
Ts'uu - Cedar Tree



Gwaii Haanas Boundary

**Marine Zoning**

- No Access
- No Harvest
- Multiple Use

**Terrestrial Zoning**

- No Access
- No Camping
- Open Access (camping allowed)

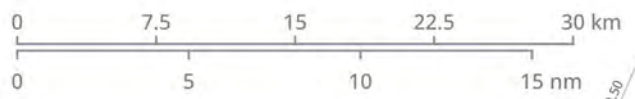
**Logistics Sites**

- Watchmen Site
- Operation Station
- UNESCO World Heritage Site
- Helipad
- Mooring Buoy
- Water Hose

**Weather Stations**

- Weather Reporting Station
- Weather Transmitter  
Cumshewa: WX3 162.475 MHz  
Barry Inlet: WX2 162.400 MHz  
Rose Inlet: WX21B 161.650 MHz
- Marine Weather Buoy  
South Moresby (46147): 51° 50.0' N, 131° 13.0' W  
South Hecate Strait (46185): 52° 24.4' N, 129° 47.0' W  
West Moresby (46208): 52° 30.0' N, 132° 42.0' W

ABBREVIATIONS  
G<sup>W</sup> = Gwaay - I. = Island  
L = Lnagaay - Town





## VISITING WITH YAHGUUDANG – RESPECT

### Land Zones:

#### On land there are 3 zones:

- **Green** areas are open to visitor access and open to camping.
- **Yellow** areas are closed to camping but open to day use.
- **Red** areas are closed to all access.

#### While on land in Gwaii Haanas, the following activities are prohibited, except for Haida use:

- Possessing, disturbing, or removing flora, fauna, and natural objects
- Hunting or trapping
- Freshwater fishing
- Possessing a firearm
- Entering caves
- Depositing garbage or other refuse
- Damaging, removing, or destroying cultural artifacts
- Flying drones or unmanned aerial vehicles (UAV)
- Burning open fires and collecting firewood above the ordinary high water mark
- Use of “bear bangers”
- Helicopter and fixed wing aircraft landings, except for management or emergency purposes

### Marine Zones:

The marine area of Gwaii Haanas is managed by a system of zones. Approximately 60% of the area is open to sustainable recreational and commercial fishing and harvesting.

#### Light teal zones are open to fishing and marine harvesting. To fish in a light teal zone, you must:

1. Have a tidal waters fishing license.
2. Follow the fishing regulations and catch limits for the specific area you visit.
3. Fish sustainably - take only what you need.

The teal zones are closed to all fishing and harvesting except for Haida use. Boating is permitted in these zones.

#### The purple zones are closed to access.

- Boating, fishing or harvesting is NOT permitted in these zones.
- These zones extend 100 m from the shoreline.

Please refer to the fold-out map in the centre of this guide for land and marine zones. There are no signs in Gwaii Haanas. It is your responsibility to know where you are and ensure your actions are permitted within the zone you are in.



## WEATHER AND SEA CONDITIONS

You put your life at risk if you venture out on the water without carefully considering the weather and its effects on sea conditions. Gwaii Haanas has a number of weather hazards unique to the area. Conditions can differ from one location to another and winds can approach from every direction. Of particular note are the following:

- Short, steep waves can develop very quickly in Hecate Strait because it is relatively shallow.
- Unless you are a very experienced mariner and are familiar with these waters, avoid the west coast of Gwaii Haanas. It is exposed, not fully charted, and has few sheltered anchorages.
- Many areas in Gwaii Haanas pose a hazard to boaters and kayakers. Use extreme caution when travelling around exposed points of land. There are often strong tidal currents, swells, and winds.
- The waters around Sg̱ang Gwaay are exposed and travellers should be cautious when planning their crossing.
- Fog can roll in quickly at any time.

### Follow these 5 steps when charting your course for the day:

#### 1. Listen to the Marine Weather Forecast

Listening to the marine weather forecast gives you the big picture – what weather systems are developing, how fast they are developing, and how they are likely to affect your area of travel.

#### 2. Observe

Keeping a constant weather watch is the single most important part of your routine.

#### 3. Identify Local Hazards

Use charts, sailing directions and, if possible, local knowledge to identify areas where the interaction between wind, tide, and landforms is likely to create hazardous conditions.

#### 4. Keep a Weather Log

Keep a weather log to record your observations and key information from the marine forecast. In particular, track changes in barometric pressure.

#### 5. Watch for:

- Strong winds, including those from the southeast increasing in strength, which may indicate a storm is on its way.
- Considerable swell which may persist for several hours or days after a storm is over.
- Strong outflow winds coming out of the heads of inlets.
- The approach of dark, threatening clouds, which may foretell a squall or storm.
- Rapid pressure changes, which can indicate an approaching storm.

No Small Craft Warnings are issued for north coast waters. The area is considered hazardous for small crafts at all times.

## WHAT THE FORECAST TELLS YOU:

The marine weather forecast for the north coast is transmitted from Prince Rupert and uses a number of repeater stations around the islands. Use the correct repeater for the area you are in and become familiar with the weather terms. The format for the forecast is:

- The synopsis describes major weather systems influencing the north coast: where they are located, which way they are moving, and what effects they are likely to have.
- Area forecasts give wind, weather conditions, sea state, and the outlook for each of the eight areas included in the North Coast forecast.
- Ocean buoy reports give recorded wind strength and direction, barometric pressure, and sea state.
- Automated reports give the wind conditions.
- Lighthouse weather reports cover sky conditions, visibility, wind, and sea state. Pay attention to the forecast for the area that you are travelling in and for the adjacent areas.

## WEATHER WATCHING AND FORECASTING

Weather systems change quickly on Haida Gwaii, so it is important to check the marine weather forecast regularly for updates especially when anticipating an incoming system or planning a bigger passage.

The Canadian Coast Guard broadcasts continuous marine weather forecasts 24 hours a day with an outlook for an additional 24 hours. They are updated four times daily at:

**Rose Inlet** Ch21B 161.65 MHz;  
**Van Inlet** WX1 162.55 MHz;  
**Barry Inlet** WX2 162.40 MHz; and  
**Cumshewa** WX3 162.475 MHz.



© Ijjuwaaas

Gina k'aadang.nga gii uu tli  
k'anguudang—Seeking Wise Counsel  
Kaagan Jaad - Mouse Woman



## TIDES AND CURRENTS

Generally, there are two high and two low tides in each 24-hour period, with approximately six hours between the high and low. Tidal range can be up to 7.5 metres (24 feet), with the highest and lowest tides occurring around the new and full moon. Large tides will have a more noticeable impact on the speed of the current. **Tides flood (rise) from south to north, and ebb (fall) from the north to the south.**

The tide table you will need to use to calculate tide times and heights will vary, depending on where you are travelling. Use the secondary ports listed in the Canadian Tide and Current Table booklet to fine-tune the height and time of each tide and current directions and speed where applicable for your specific location. Secondary ports listed in the tide tables do not cover all of Gwaii Haanas, so it is necessary to approximate the tides in some locations.

**Some currents are marked on the marine charts.**

**Tides rushing through narrow inlets and channels increase in speed.**

**The hazard for rough waters increases when the wind and tide are running in opposite directions causing steep standing waves.**

**If you are kayaking against the current, paddle close to shore. Keep an eye on range marks. Sometimes, you can have the illusion of making progress when, in fact, you're actually gaining little or no ground.**



© Ijjuwaas

Gina 'waadluxan gud ad kwaagid  
—Interconnectedness

Taan ad Chiina - Black Bear and Salmon



## AREA CLOSURES

To protect areas with significant cultural, spiritual, and ecological values, the following islands and islets are permanently closed to access:

- Titul Island
- Hotspring islets
- House Island and islets
- Bolkus Island and islets
- The isthmus between the two eastern Swan Islets
- Rock Islet and surrounding islets
- Slug Islet and surrounding islets
- Skincuttle Island and surrounding islets
- Jeffrey Island and surrounding islets
- East Copper Island and surrounding islets
- Rankine Islands
- Garcin Rocks
- Kerouard Islands and surrounding islets
- Sgang Gwaay *Anthony Island* islets
- A portion of the north shore of Ramsay Island, across from Gandll K'in Gwaay.yaay *Hotspring Island*

It is your responsibility to know where you are to ensure you only visit open land and marine areas. Use your marine charts and the map in the centre of this guide.

### RESTRICTED ACCESS:

- Bowles Point headland, west of the existing trail between the north and south beaches, is closed.
- Burnaby Narrows is closed to camping. Avoid walking in the intertidal area to protect the marine life living there. Float through the narrows instead.
- Please note that the Jedway Mine Site in Harriet Harbour on the south side of Skincuttle Inlet is also closed to visitor access, through provincial regulations.
- At Louscoone Point, avoid trampling on the steep slope to minimize erosion.
- Do not go ashore at 'Laana Daaḡang.nga, *Swan Bay Rediscovery Camp* for youth located in Swan Bay on Burnaby Island. In July and August, do not anchor within sight or sound of the camp.

Refer to Parks Canada's "Gwaii Haanas Important Bulletins" webpage for current area closures and activity restrictions.

## CAMPING

Gwaii Haanas does not have designated campsites. Unless you are weathered in, limit your stay at any one site to three nights.

Most areas that visitors find suitable for camping are the same areas that the Haida have used for generations. These locations have important ecological, spiritual, and archaeological values. Please show *yahguudang respect* by treating the area with care and minimizing your “footprint” on the land.

## INTERTIDAL PRIVY

Use the intertidal privy. Make your deposit as close as possible to the waterline and cover with a rock. The microorganisms in the ocean will decompose the waste.

- If you have no alternative, you can use the bush method. Dig a small 20-centimetre (8-inch) deep hole away from animal trails and at least 100 metres/yards from water sources.
- Bury human waste completely with soil. Never bury toilet paper or feminine hygiene products. Pack out your toilet paper or burn it in a beach fire. Treat feminine hygiene products as garbage.



## HIKING SAFELY

- If you plan to hike, be prepared. Bring a topographic map, compass, radio or satellite phone, proper footwear, rain gear, and a survival kit.
- To protect the sensitive and unique alpine vegetation, camp below the tree line and be sure to pack out all garbage.
- All caves are closed to access.

# CAMPING IN GWAI HAANAS

**CAMP AWAY** from the mouths of streams, especially during salmon spawning season (beginning mid-August) to avoid bear encounters.

**USE BIODEGRADABLE SOAP** when bathing. Select a location near the mouth of the stream and downstream from any place where people gather water for drinking.

Have **NO MORE THAN 12 PEOPLE** on shore at any one time.

**STAY OUT OF SIGHT** and sound of other groups.

**WASH** your dishes in the ocean with biodegradable soap and use sand as a natural scrubber.

Whenever possible, **CAMP ON THE BEACH** or on rock above the current high tide line.

Keep **CAMPFIRES** small and below the high tide line. Burn driftwood for fuel and never leave the campfire unattended. Before you leave, scatter any rocks used for a hearth.

**USE A PORTABLE STOVE** whenever possible.

**DISMANTLE BEACH "FURNITURE"** and put logs and rocks back in random positions before you leave.

Treat each campsite as an archaeological site. **DO NOT DIG** through middens or disturb any historical features.

**PACK OUT ALL GARBAGE.** Do not burn foil or plastics. Burn food scraps completely or bag them securely for packing out. Return fish entrails to the sea well offshore. Improperly handled food waste can create a dangerous situation for the next camper.

Hang all food, garbage, grease, and toiletries, including toothpaste and feminine hygiene products, well away from sleeping areas, and at least 5 metres/ yards up a tree and 1.5 metres/yards away from the tree trunk. **NEVER LEAVE FOOD OR TOILETRIES OUT** when the camp is unattended. Do not cache food or garbage in kayaks.

**1.5 metres** away

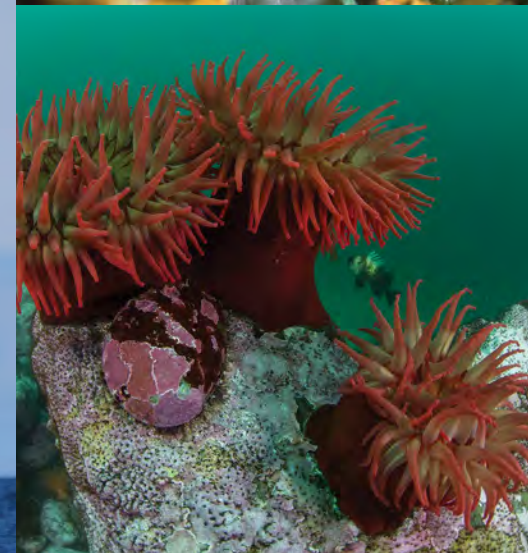
**5 metres** up



## WILDLIFE VIEWING

Gwaii Haanas offers many opportunities for watching wildlife in their natural habitat. Please give wildlife the space they need to feed, rest, and raise their young.

Remember Gwaii Haanas is a no-drone zone. See the infographic on the next page for specific guidelines when watching wildlife.



# WATCHING WILDLIFE IN GWAI HAANAS

KEEP A MINIMUM OF 100 METRES AWAY from all marine mammals.

BE CAUTIOUS and quiet when around haul-outs, especially during breeding and pupping seasons (May to July).

BACK AWAY at the first sign of disturbance or agitation.

100-200 METRES AWAY

DISCOURAGE BOWRIDING. Should dolphins or porpoises choose to ride the bow wave of your vessel, reduce speed gradually and avoid sudden course changes.

200 METRES AWAY  
STAY AT LEAST 200 METRES AWAY from killer whales.

AVOID DISTURBING SEABIRDS especially during the breeding season (February through September)

Ensure your boat is RODENT-FREE. Rats prey on seabird eggs and chicks.

AVOID using flashlights, campfires, and boat lights near seabird colonies. Some birds come ashore only at night and may be disoriented by the lights.

100 METRES AWAY

SLOW DOWN and reduce your wake/wash.

AVOID anchoring near seabird colonies since boat lights and rigging can be deadly to approaching birds.

DO NOT APPROACH nests or go ashore on seabird colonies. Many seabirds will abandon their nests, eggs or chicks if they are disturbed.

AVOID approaching SEABIRDS.

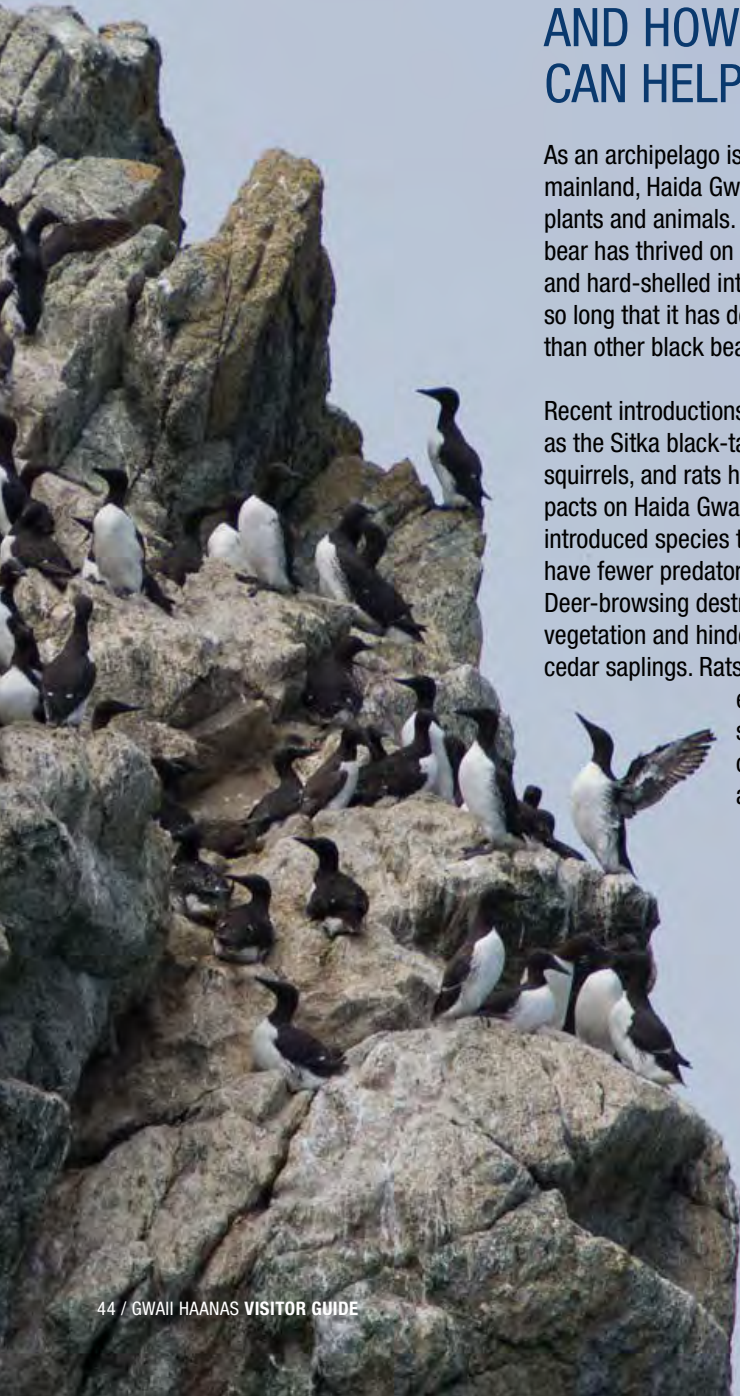
AVOID making noise near the colonies.

If in doubt, stay 200 metres away.

# INVASIVE SPECIES AND HOW YOU CAN HELP

As an archipelago isolated from the mainland, Haida Gwaii has many unique plants and animals. The Haida Gwaii black bear has thrived on a rich diet of salmon and hard-shelled intertidal creatures for so long that it has developed larger jaws than other black bears.

Recent introductions to Haida Gwaii, such as the Sitka black-tailed deer, raccoons, squirrels, and rats have had serious impacts on Haida Gwaii ecosystems. These introduced species thrive because they have fewer predators and competitors. Deer-browsing destroys forest understory vegetation and hinders the growth of cedar saplings. Rats have decimated entire colonies of seabirds by preying on eggs, chicks, and adult birds.



## HELP PROTECT

Seabirds, native forest plants and underwater eelgrass meadows.



Introduced invasive species including rats, raccoons, deer, and European green crabs are among the biggest threats to Gwaii Haanas plants, animals and ecosystems.

**We all share responsibility for stopping the spread of invasive species to Gwaii Haanas. You can do this by:**

- Inspecting your boat and gear for signs of rats and invasive marine species
- Cleaning your boat hull, gear and belongings before going into Gwaii Haanas
- Rat-proofing your vessel
- Reporting marine invasive sightings
- Rat-proofing kits are available by request from the Gwaii Haanas Visitor Experience team. Go to the office to get one or call or email ahead to request one.

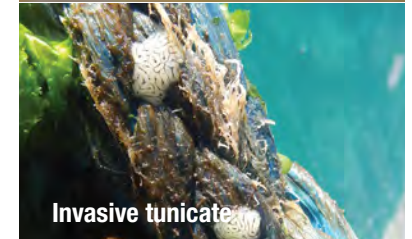
## INVASIVE SPECIES TO LOOK OUT FOR:



Raccoon



Rat



Invasive tunicate



European green crab

### How to Report:

Report invasive marine species (tunicates, European green crabs, etc.) to:

[invasives@haidanation.com](mailto:invasives@haidanation.com)

Take clear photos, record date and locations. Report rat and raccoon sightings to: [gwaiihaanas@pc.gc.ca](mailto:gwaiihaanas@pc.gc.ca)

# TAKE THE HAIDA GWAII PLEDGE

To educate yourself on how  
to be a respectful visitor.

<https://haidagwaiipledge.ca/>







**Share your experience with us!**  
**What did you enjoy about your visit?**  
**What would make it more enjoyable next time?**

## **CONTACT GWAI HAANAS**

**Phone: 1-877-559-8818 or 250-559-8818**

**Emergency: 780-852-3100**

**Email: [gwaiihaanas@pc.gc.ca](mailto:gwaiihaanas@pc.gc.ca)**

**Web: [pc.gc.ca/gwaiihaanas](http://pc.gc.ca/gwaiihaanas)**

**[facebook.com/gwaiihaanas](https://facebook.com/gwaiihaanas)**

**Are you planning to share  
your trip on social media?**

Our media team can help you with fact checking, spelling of Haida names and can answer your questions.  
Email: [gwaiihaanas@pc.gc.ca](mailto:gwaiihaanas@pc.gc.ca)  
to connect with our media team.