



Riding Mountain  
National Park

# WINTER RECREATIONAL FISHING

## IN RIDING MOUNTAIN NATIONAL PARK



[pc.gc.ca/riding](http://pc.gc.ca/riding)



Parks  
Canada

Parcs  
Canada

Canada

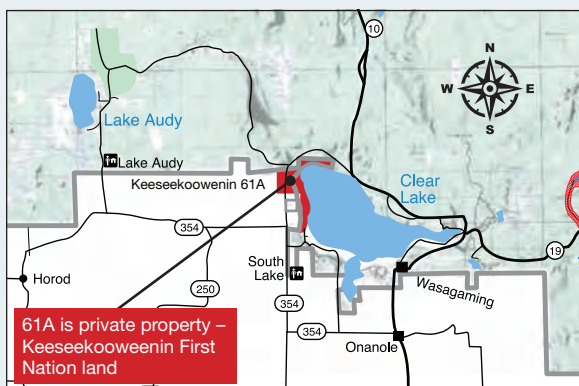
# WELCOME TO RIDING MOUNTAIN NATIONAL PARK

Home to over 1900 lakes, 650 streams and countless wetlands, Riding Mountain National Park offers a recreational ice fishing experience within these protected lands. A Parks Canada fishing permit *must* be purchased if you wish to be part of this amazing privilege within the Park. **Please note that Provincial fishing licenses are not valid for fishing in a National Park.**

By obtaining a Parks Canada fishing permit, it will uniquely state that it is for use in Riding Mountain National Park only, for the timeframe purchased. Parks Canada permits provide valuable feedback on angling activities and help us monitor the health of the recreational fishery. This information is essential so that we may continue to manage and protect these precious areas for generations to come.

## ■ ICE FISHING LAKES

**Ice Fishing is allowed on Clear Lake and Lake Audy only.**



## ■ FISHING TIMES / SEASON

Ice fishing is permitted from one hour before sunrise until two hours after sunset.



The ice fishing season ends **March 31**.

## ■ LIMITED USE OF OVER-SNOW VEHICLES

**Clear Lake** – Over-snow vehicles may be used on the lake for the purpose of ice fishing only. All other forms of motorized transportation on the lake are prohibited. Over-snow vehicles may be launched from Boat Cove, Frith Beach, The Spruces, and the east end of the lake.

**Lake Audy** – Over-snow vehicles are not permitted.



## ■ LINES AND LIMITS

An angler can only use **one line** at a time. Do not leave it unattended. Remember, if you have caught your allowable daily limit of fish, then it is unlawful to continue to fish on the same day.



## ■ ANGLERS UNDER AGE 16

Anglers under 16 do not require a permit but they **must be accompanied by a valid permit holder, 16 or older, in order to fish**. Their catch must be counted within the permit holder's daily limit. Otherwise, if the 16 or older angler purchases their own permit, they can keep their own full limit!

## ■ GENERAL CATCH LIMITS

Maximum daily catch and possession limits per species and combined catches are as follows:



SPECIES	CATCH LIMIT
Pike	3 (only one may exceed 76 cm)
Walleye	2
Perch	5
Whitefish	5
	<b>Combined catch limit is 5 fish</b>

## ■ GEAR

Keep your gear clean and dry before entering Park waters to prevent the entrance of aquatic invasive species.



**Lead tackle weighing less than 50g and barbs on your hooks are not permitted within our Park for fishing.**

Please also remember, only use lures with a maximum of two hooks.



## ■ BAIT

**Leeches, minnows and other fish parts are prohibited for use as bait.** Night crawlers and other natural bait are allowed.



We are committed to keeping invasive species out of our protected lakes. By not bringing in bait from other waterbodies, the risk of contaminating our lakes with invasive species is greatly reduced. Let's manage this together!

## ■ FISHING HUTS


**Clear Lake – Seasonal fishing huts are permitted on the lake** but must be off the ice as/when weather dictates when lake ice depth becomes inconsistent. Hut **MUST** have owner contact info on the outside.



**Lake Audy – Pop-up fishing huts are permitted** but must be removed at the end of each day.

## ■ ICE THICKNESS



 **Cars and trucks are not permitted** on the ice surface of any lakes within the Park. **Over-snow vehicles are only permitted** on Clear Lake.



## ■ OUR NEIGHBOURS

On Clear Lake, the shoreline of the Keeseekoowenin Ojibway First Nation (between Camp Wannakumbac and Aspen picnic area) is **PRIVATE PROPERTY**. Trespassing is not permitted.

## ■ FISHING PERMITS

Purchase your RMNP Fishing Permit in person:

- **Park Administration Office**  
Hours: Monday to Friday,  
8 a.m. - 12 p.m. and 12:30 p.m. - 4 p.m.  
204-848-7275
- **South Gate** (winter weekends)
- **Elkhorn Resort (24/7)**  
204-848-2802
- **Friends of RMNP**  
204-848-4037

## Emergency – 911

**24-Hour Park Dispatch, Non-Emergency,  
Report Fishing Violations**  
1-877-852-3100

## ■ ONLINE RESOURCES

### **AdventureSmart**

[adventuresmart.ca/water/icesafety.htm](http://adventuresmart.ca/water/icesafety.htm)

### **RMNP Website**

[pc.gc.ca/en/pn-np/mb/riding/activ/rec/activ1-fsh](http://pc.gc.ca/en/pn-np/mb/riding/activ/rec/activ1-fsh)

### **RMNP Visitor Safety**

[pc.gc.ca/en/pn-np/mb/riding/securite-safety](http://pc.gc.ca/en/pn-np/mb/riding/securite-safety)

**REMEMBER: A valid Park Pass is also required while fishing with us!**