

# How Might this Affect Me?

## Potential Physical Harm

### Sharp shells can cut.

People protect themselves by wearing water shoes or other protective layers.



Arm cut by zebra mussel shell.

Photo: Pamela Racette

## Monetary Cost

### Increased maintenance costs.

Zebra mussels attached to watercraft, motors, docks and other surfaces are difficult to remove. If not physically removed, they can damage equipment, and block water flow. Dealing with them costs millions of dollars every year in Canada.



Propellers encrusted in mussels

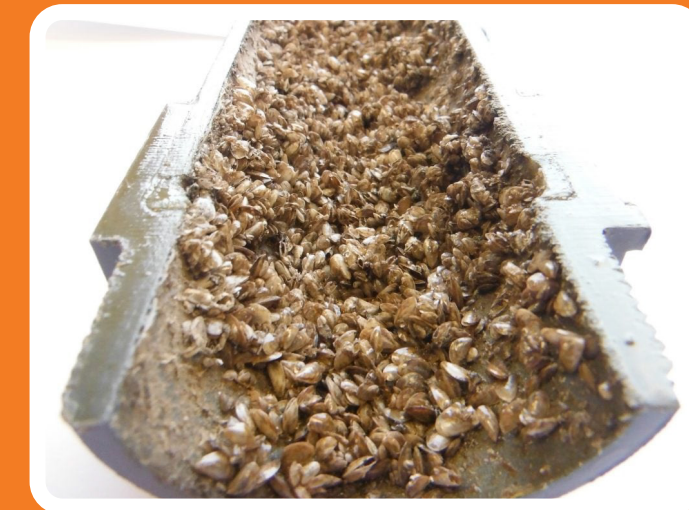
Photo: Province of Manitoba

## Ecological Impact

Zebra mussels often outcompete native fish and wildlife, lock away nutrients in their shells, and disrupt the food web. They can colonize fish spawning areas and consume plankton. They have also been linked with toxic algal blooms.

## Effects on Infrastructure

Clogged water intakes can create problems for water treatment facilities, irrigation systems as well as industrial and commercial operations.



Water intake pipe clogged with mussels.

Photo: Province of Manitoba

Once they are widely established, there is no known way to get rid of zebra mussels.

# What Can I Do?

## Clean, Drain, Dry



### CLEAN

all plants, organisms, and mud from boat and gear.



### DRAIN

all water from boat and gear onto land. Remember to keep all plugs out until next launch.



### DRY

boat and gear completely before launching again.

## Have Patience

Parks Canada makes evidence-based decisions. Our next steps will be guided by the best available science.

## Abide by Fishing Regulations

- The use of frozen or live bait is illegal in RMNP.
- Don't use your fishing equipment on multiple water bodies.
- Decontaminate your ice fishing equipment properly. It must be frozen at -10°C for 72 hours.

Spread the Message.  
Not the Mussels.

Do not transport live zebra mussels.  
It is illegal.

Tell your friends and family about the importance of not transferring aquatic invasive species.

## Stay Informed

Educate yourself. Go to our website:  
[parks.canada.ca/ridingmountain](https://parks.canada.ca/ridingmountain)

or to the Province of Manitoba's AIS Unit's website:

[manitoba.ca/stopais/index.html](https://manitoba.ca/stopais/index.html)



RMNP



Manitoba