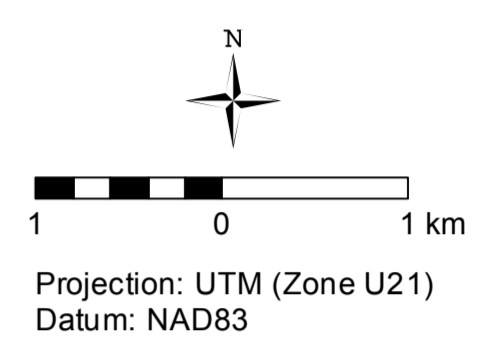


# Hiking Routes of the Long Range Mountains Gros Morne National Park, Newfoundland and Labrador

- Campsite
- Viewpoint
- Waypoint
- Hiking Trails (Maintained)
- Long Range Traverse
- Northern Traverse
- Snug Harbour to North Rim
- Contour Lines (10m)



Map produced on April 28, 2016 by Gros Morne National Park.  
Map Source: Toporama map series, to downloaded from the Natural Resources Canada website January 25, 2016. For detailed information regarding the map series, or to download the most current topographic (1:50,000 scale) maps, visit <http://GeoGratis.gc.ca>.  
This map is not for navigation purposes. Please obtain the most current topographic map sheets 12H13 St Pauls and 12H12 Gros Morne.  
For further information about hiking in the Long Range Mountains, including detailed route descriptions, GPS trackfiles and waypoints, visit [www.gc.ca/grosmorne](http://www.gc.ca/grosmorne).

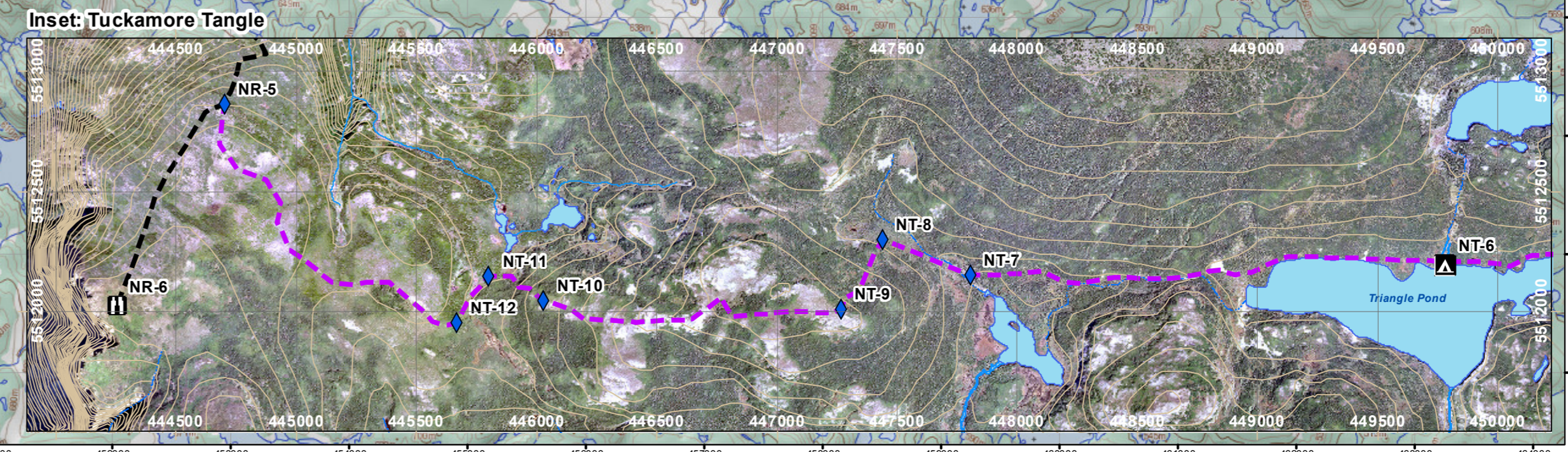
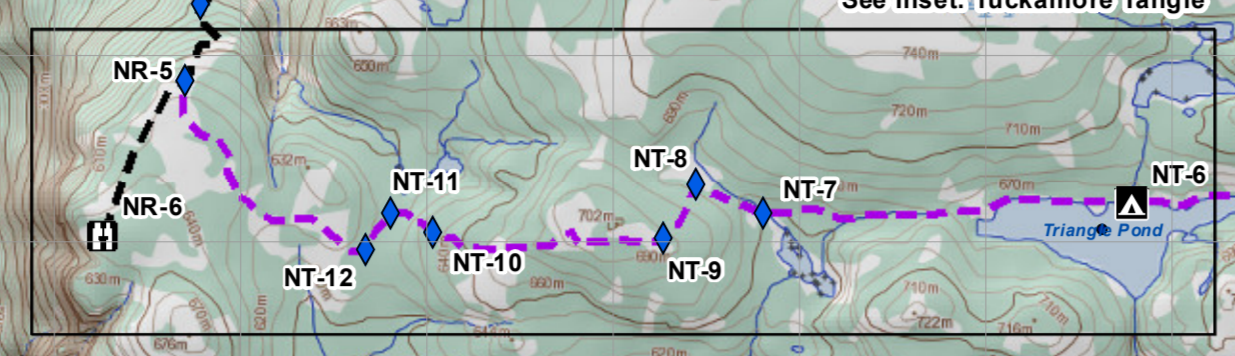
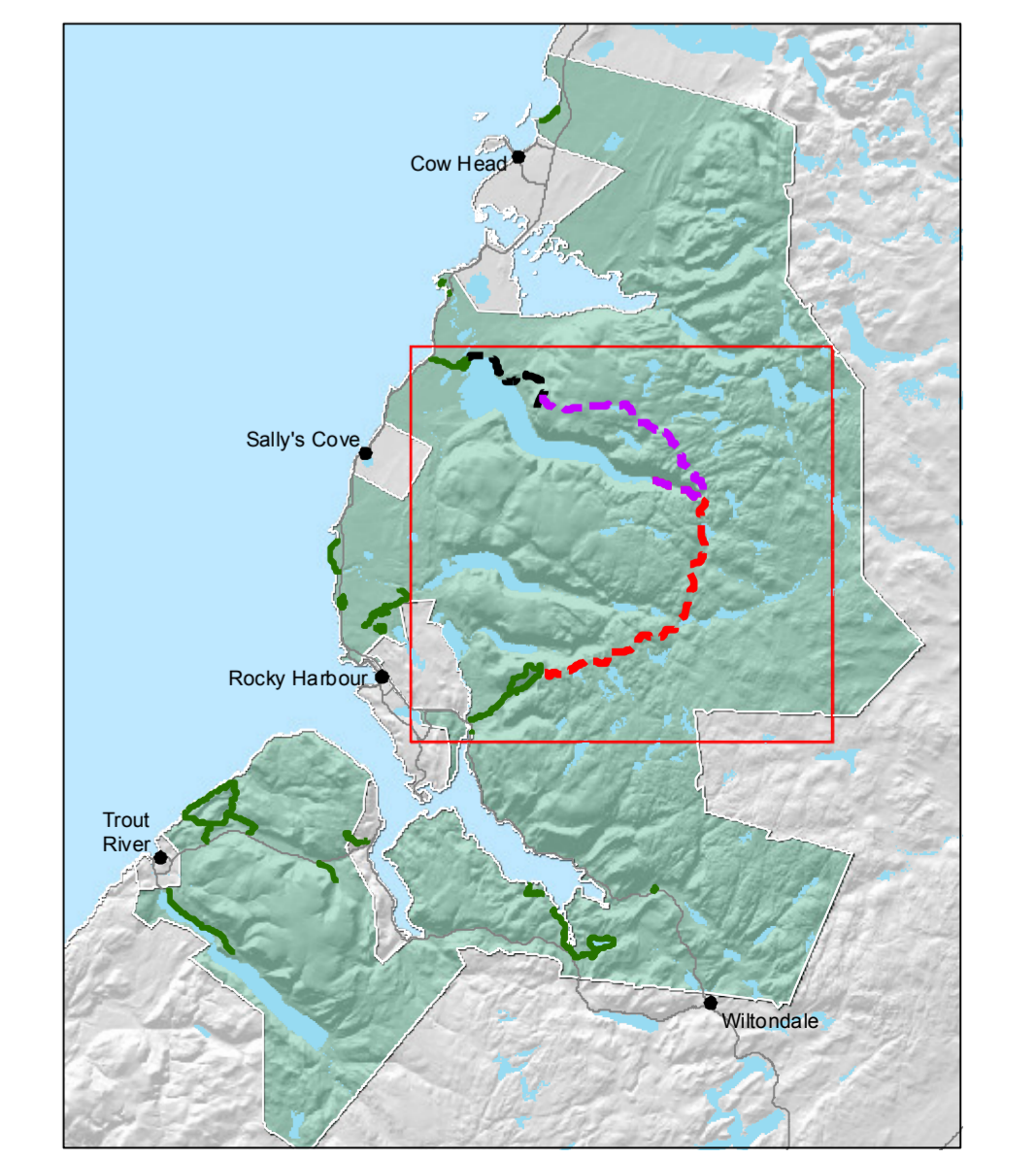
**Waypoints:**  
Note: The waypoints below are key navigational reference points only. Safe navigation between waypoints requires wilderness route finding skills and experience using maps, compass, and GPS. Detailed route descriptions and GPS trackfiles are available on the Gros Morne National Park website at [www.gc.ca/grosmorne](http://www.gc.ca/grosmorne).

Distance	Waypoint	Location Description	UTM (Zone 21U)
4.0 km	LR-1	Campsite: Western Brook Pond	452580m E / 5507076m N
	LR-2	waterfall	454800m E / 5506121m N
	LR-3	start of rock slab	455059m E / 5506050m N
	LR-4	top of gorge	455782m E / 5506005m N
2.5 km	LR-5	Campsite: Little Island Pond	455426m E / 5505813m N
	LR-6	Campsite: Marks Pond	454721m E / 5501255m N
4.5 km	LR-7	notch	454722m E / 5499601m N
	LR-8	Campsite: Hardings Pond	453863m E / 5497462m N
7.0 km	LR-9	ridge	452728m E / 5496465m N
	LR-10	narrow between two ponds	451920m E / 5494460m N
	LR-11	Campsite: lower Green Island Pond	449043m E / 5494708m N
5.5 km	LR-12	Campsite: upper Green Island Pond	448772m E / 5494646m N
	LR-13	Bakeapple Pond View Point	446937m E / 5494497m N
	LR-14a	descent into Ferry Gulch	445122m E / 5493862m N
	LR-14b	ascend out of Ferry Gulch	444992m E / 5494026m N
	LR-15	Gros Morne Mountain trail	444483m E / 5493956m N
7.5 km	LR-16	Campsite: Ferry Gulch	444538m E / 5493808m N
	LR-17	Parking Lot: Gros Morne Mountain trail	439821m E / 5490687m N

Distance	Waypoint	Location Description	UTM (Zone 21U)
4.0 km	LR-1	Campsite: Western Brook Pond	452580m E / 5507076m N
	LR-2	waterfall	454800m E / 5506121m N
	LR-3	bottom of rock slab	455059m E / 5506050m N
2.0 km	NT-1	top of rock slab	455545m E / 5506083m N
	NT-2	saddle	455545m E / 5506764m N
7.5 km	NT-2a	Viewpoint: Western Brook Pond (optional)	454906m E / 5506665m N
	NT-3	Campsite: Gilley Pond	454729m E / 5507890m N
9.0 km	NT-4	ridge	452772m E / 5510353m N
	NT-5	lead in tuckamore	450846m E / 5511330m N
5.0 km	NT-6	Campsite: Triangle Pond	449777m E / 5511917m N
	NT-7	small over lead	447802m E / 5512153m N
	NT-8	bog	447436m E / 5512301m N
	NT-9	rock outcrop	447263m E / 5512014m N
	NT-10	game path	446625m E / 5512046m N
	NT-11	narrow bog	445798m E / 5512477m N
	NT-12	game path	445665m E / 5511957m N
3.0 km	NR-5	plateau	444699m E / 5512866m N
	NR-6	North Rim viewpoint	444525m E / 5512029m N

Distance	Waypoint	Location Description	UTM (Zone 21U)
3.0 km	NR-1	Parking Lot: Western Brook Pond trail	437068m E / 5515346m N
	NR-2	Western Brook	439644m E / 5515421m N
5.0 km	NR-3	Campsite: Snug Harbour	442364m E / 5513790m N
	NR-4	Start of North Rim access trail	442726m E / 5513801m N
2.5 km	NR-4	boulder: end of North Rim access trail	444783m E / 5513271m N
	NR-5	plateau	444699m E / 5512866m N
1.5 km	NR-6	North Rim viewpoint	444525m E / 5512029m N

Distance	Waypoint	Location Description	UTM (Zone 21U)
7.5 km	LR-16	Parking Lot: Gros Morne Mountain trail	439821m E / 5490687m N
	LR-15	Campsite: Ferry Gulch	444538m E / 5493808m N
2.5 km	LR-15	Depart Gros Morne Mountain trail	444783m E / 5513271m N
	LR-14b	ascend out of Ferry Gulch	444992m E / 5494026m N
	LR-14a	descent into Ferry Gulch	445122m E / 5493862m N
2.5 km	LR-13	Bakeapple Pond viewpoint	446937m E / 5494497m N



**WARNING:** This map contains information on hiking routes in Gros Morne National Park of Canada. This map was prepared by Parks Canada using its best judgment in light of the information available to it at the time of preparation. Any use you make of this map and any reliance on or decisions made based on this map are your own responsibility absolutely. Parks Canada, its employees and its agents accept no responsibility for damages, if any, suffered by you or any third party as a result of decisions made or actions based on the map. For greater certainty, under no circumstances whatsoever will Parks Canada, its employees, or its agents be held liable for any loss or damage that may occur to you and any person or persons or property by reason of your or their reliance upon these maps.