

Winter Guide & Trail Map 2024-2025



Aussi disponible en français.

Winter Activities

Cross-Country Skiing

Pack a lunch and make a day of it! There are groomed trails for skate and classic skiing or choose your own route and venture off the beaten path.

See map for trail distances and difficulty levels.

Looking for more ski trails? Enjoy more cross-country ski trails at Elk Ridge Resort and Great Blue Heron Provincial Park.

Snowshoeing

Inspired by nature, snowshoes are a way to become lighter on your feet in deep snow. So, think light on your toes like a lynx or a hare! Use extra caution when snowshoeing over ice.

Please do not snowshoe on groomed ski trails.

Caution: Boardwalk and stairs on any designated winter trail are not cleared of snow.

Picnic Shelter

Need a place to warm up and have lunch? The four enclosed shelters in the park offer the perfect sanctuary for a picnic:

- Main Beach across from the Visitor Centre
- Birch Bay on Kingsmere Road
- Crean Day Use Area at end of Crean ski trail
- Southend Campground on Kingsmere Lake

Fishing

Ice fishing season on Waskesiu Lake is open until March 31.

A valid Prince Albert National Park fishing license is required. Licenses can be purchased at the Visitor Centre.

Winter Camping

Why not spend the night? The northern sky, solitude and sense of adventure make a winter camping experience unlike any other.

Birch Bay is designated as a winter campground with access to firewood. Enclosed picnic shelters are shared, public spaces. Overnight camping in the shelters is prohibited. Register at the Visitor Centre before any overnight excursions, including backcountry winter camping.

ADDITIONAL ACTIVITIES

- **Skating:** The indoor rink on Montreal Drive is operated by the Waskesiu Recreation Association. Bring your own skates, fees apply.

Trail Conditions

For up-to-date trail conditions visit parks.canada.ca/PANP-trail-conditions

Park entry fees apply year-round. Breeze by the Visitor Centre to pick up your permit before hitting the trails.

Ski Trail Etiquette

- Do not walk, snowshoe, bike or take dogs on groomed ski trails.
- Descending skiers have the right of way.
- Move off the trail when resting or visiting.
- Pack out all garbage.
- Avoid damaging the classic ski tracks when climbing hills or skate skiing.



Pets are Welcome

- Keep your pet on leash and under control at all times. This is for their safety as well as wildlife and other visitors.
- Please do not take dogs on groomed ski trails.

Welcome | Bienvenue | tawâw

Prince Albert National Park is located on Treaty 6 territory, the lands of the nîhithaw (Woodland Cree), nêhiyawak (Plains Cree), Dene, Dakota, and the homeland of the Métis. These lands and waters have been cared for by Indigenous peoples for generations and continue to be used and protected today.

We recognize the shared responsibility for the stewardship of the land and waters. Do your part to protect this special place.

kistapinânihk ihtakwan askiy kâ-kî-masinahikatik asotamâkîwinihk Treaty 6, askiy î-tîpîthitahkwâw nîhithawak, nêhiyawak, Dene, Dakota, ikwa âpîhtawikosisânak the Metis. askiy mîna nipiy kanawîhtamwak nîhithawak mîna kayâs ôta ithiniwak kâwikicik ikwa kiyâpic kwayask kanawîhticikâtîwa. niwâpahtînan ohcitaw poko

kita-mâmawi-kanawîhtamahk askiy mîna nipiy. kîsta wîchîwî kita-kanawîhtaman ôma askiy.

Prince Albert Tooroon not grawn piyee Li grawn bwa aykawnimma ashtay didawn Treetee Sis Li territwayr, li tayr ouschi nîhithaw (Daw li bwaw awn Cree), nêhiyawak (Li Promyee Nawsoyon), Dene, Dakota, pi la tayraen'd weekinawhk ouschi aen Michif li moond. Oohin li tayr pi diloo kee-pishkayimooowawn ouschi Indigene li moond poor ashpin kayawsh ouschi pi ahkamay awpachistawn pi kenawayschikawtayw anoush.

Ninishtowinaynawn ooma weechi- pishkayimoooin poor nakatouhkawtaywin li tayr pi diloo. Weechiwayw chi-kenawayschikawtayk ooma kischee la plaes.

2024-25 Winter Events

CHRISTMAS TREE HARVEST November 22 - December 23

Start a new family tradition and help protect Waskesiu from wildfire. Come cut down a Christmas tree in the Waskesiu Community Fuel Break. Pick up your free tree permit and map at the Visitor Centre.

For more information about the Christmas tree harvest and to obtain a permit, call the Visitor Centre at 1-306-663-4522.

GUIDED PROGRAMS

Parks Canada interpreters are enthusiastic and knowledgeable and offer public programs and paid private programs ready for groups. Call the interpretation team at 1-306-930-5323 for more information.

Wildlife Safety

For your safety, the safety of others and the safety of wildlife, please stay a respectful distance away from any wild animal. When possible allow a minimum of 30m distance from elk and other ungulates and 100m from predators such as wolves and cougars.

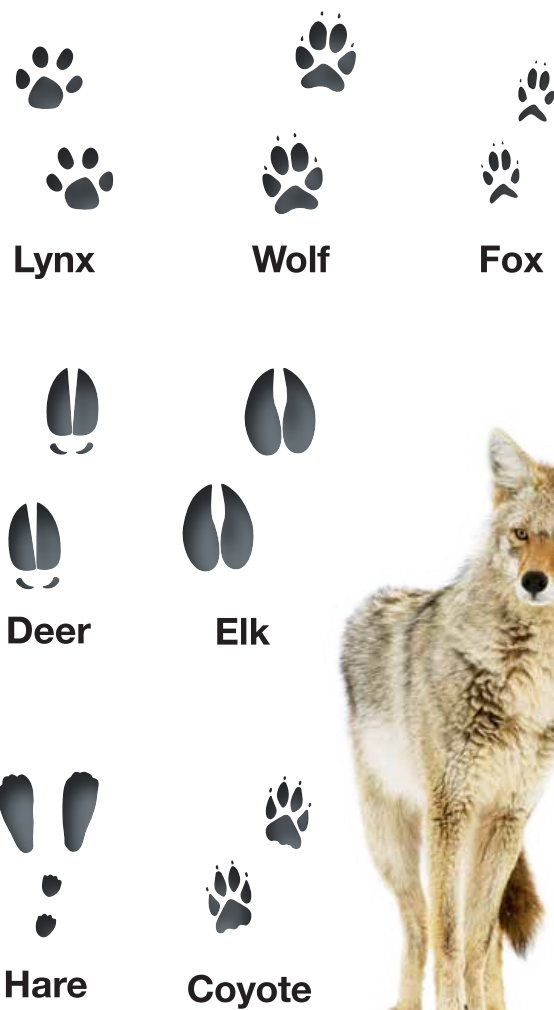
Wildlife Viewing Opportunities

- Take a drive along the park's many scenic roadways.
- Look carefully across frozen lakes; you may spot wolves.
- Visit the Narrows of Waskesiu Lake where otters often play in the open waters. Be cautious and stay off the ice – it is very thin here.

Remember: Do not feed wildlife; they have a greater rate of survival and are healthier when they eat natural food.

View Wildlife

Winter is a great time to view wildlife and their tracks. Elk, white-tailed deer, moose, red fox, wolf and lynx are some of the larger mammals you may see. Watch for signs of otter, fisher, marten, snowshoe hare and weasel too. Bird watchers can also search for the over 30 species of birds that make Prince Albert National Park their winter home.



Services

Visitor Centre 1-306-663-4522

The Prince Albert National Park Visitor Centre is in Waskesiu and open year round. Friendly staff are available to provide information about trail conditions, upcoming events and winter camping.

- Register here for winter camping
- Pick up:
 - Park entry passes
 - Camping permits
 - Fishing licenses
 - Brochures
 - Parks Canada official merchandise

Accommodation and Dining

WASKESIU	
	Chateau Park Chalets 1-306-663-5556
	Elk Ridge on the Lake 1-306-663-6161
	Hawood Inn 1-877-441-5544
	Kapasiwin Bungalows 1-877-963-5225
	Lost Creek Resort 1-866-663-8622
	The Suites at Waskesiu 1-306-663-4620

SURROUNDING AREA

	Elk Ridge Resort 1-844-306-4653
	Land of the Loon Resort (Anglin Lake) 1-306-982-4478

Gas Station

In winter, the nearest gas station to Waskesiu is LT's Food & Fuel. It is approximately 15 km from Waskesiu at the junction of Highway 2 and Highway 264, outside of the park.

Directory

Visitor Centre

Check the park website or call the visitor centre for hours of operation.

Closed December 25 & 26

1-306-663-4522

princealbertinfo@pc.gc.ca

parks.canada.ca/princealbert

[@ParksCanada_SK](https://www.facebook.com/PrinceAlbertNationalPark)

[facebook.com/PrinceAlbertNationalPark](https://www.facebook.com/PrinceAlbertNationalPark)

Toll-free National General Information Line:
1-888-773-8888

Emergency

Dial 9-1-1 RCMP, Fire and Ambulance
1-877-852-3100 For all other emergencies (Parks Canada Dispatch)

Road Conditions

hotline.gov.sk.ca

Toll-free across Canada: 1-888-335-7623

SaskTel cell network: *ROAD (*7623)

Stay informed about upcoming events, important park updates or conservation work at Prince Albert National Park. Get the latest news straight to your inbox with the click of a button. Subscribe today!



Prince Albert National Park Winter Trails

Legend

- | | |
|----------------------|--------------------------|
| First Aid | Viewpoint |
| Visitor Centre | Winter Camping |
| Restaurant | Parks Canada Merchandise |
| Gas Station | Shower |
| Enclosed Shelter | Police |
| Accommodation | Snowshoe Route |
| Ice Rink | Cross-country Ski Trail |
| Cross-country Skiing | Paved Road |
| Skate Skiing | Gravel Road |
| Ice Fishing | Park Boundary |
| Washrooms | Big Rock |
| Parking | |

Please do not walk, snowshoe, bike, or take dogs on groomed ski trails.

Cross-country ski trails

(distance, difficulty, trail grooming)

1 BEAVER GLEN* Starting at the Big Rock - 5.7 km loop, Easy, Classic & Skate Skiing

This trail parallels Waskesiu Drive then circles the Beaver Glen Campground. The Beaver Glen portion links to the Red Deer Yellow trail. The section of trail along Waskesiu Drive is lit for night skiing.

ACCESS: Lakeview Drive and Waskesiu Drive intersection
*Trail may change. Please contact the Visitor Centre for updated trail information.

2 WAPITI Starting at the Big Rock - 8.5 km loop, Medium, Classic
A perennial favourite, this trail follows the golf course. The course's rolling terrain makes for a great ski. Watch for chilly conditions on windy days.

ACCESS: Lakeview Drive and Waskesiu Drive intersection or south end of Montreal Drive. For the best experience, ski the route counter-clockwise.

3 RED DEER RED Starting at the Big Rock - 6.9 km one way, Medium, Classic
This trail links Wapiti with the Fisher trail. The route has a few significant hills with challenging corners, though it is gently rolling in many sections.

ACCESS: Wapiti Trail, Lakeview Drive and Waskesiu Drive intersection or Fisher Trail

4 RED DEER YELLOW Starting at the Big Rock - 2.8 km one way, Easy, Classic
This trail is linked to Red Deer Red, Fisher and Beaver Glen trails. The route is flat to gently rolling.

ACCESS: Lakeview Drive and Waskesiu Drive intersection

5 FISHER Starting at the Big Rock - 8.9 km loop, Medium, Classic
This trail is great for a family outing; scenic and close to Waskesiu. The trail ventures through mixed woods, aspen stands and black spruce muskeg.

ACCESS: Adjacent to Highway 264 entrance to Waskesiu or Lakeview Drive and Waskesiu Drive intersection. For the best experience, ski the route clockwise.

6 CREAN 19 km return, Easy, Classic & Skating
With long gentle slopes, this trail parallels the Hanging Heart Lakes following a patrol road. The trail passes through mature coniferous forest dotted with balsam fir before it reaches Crean Lake near its connection with the Heart Lakes. Be cautious of thin ice on Crean Channel.

ACCESS: 500 m south of Birch Bay, 11 km north of Waskesiu on the Kingsmere Road.

7 GREAT BLUE HERON PROVINCIAL PARK Saskatchewan Parks maintains 18 km of groomed cross-country ski trails at Anglin Lake. From rolling hills to challenging slopes, these trails offer a variety of options for skiing. Trailhead parking is located at Jacobsen Bay Boat Launch off Highway 953 approximately 40 km from Waskesiu. A 0.9 km spur trail connects Spruce River Highlands Trail to 18 km of ski trails in the Anglin Lake area.

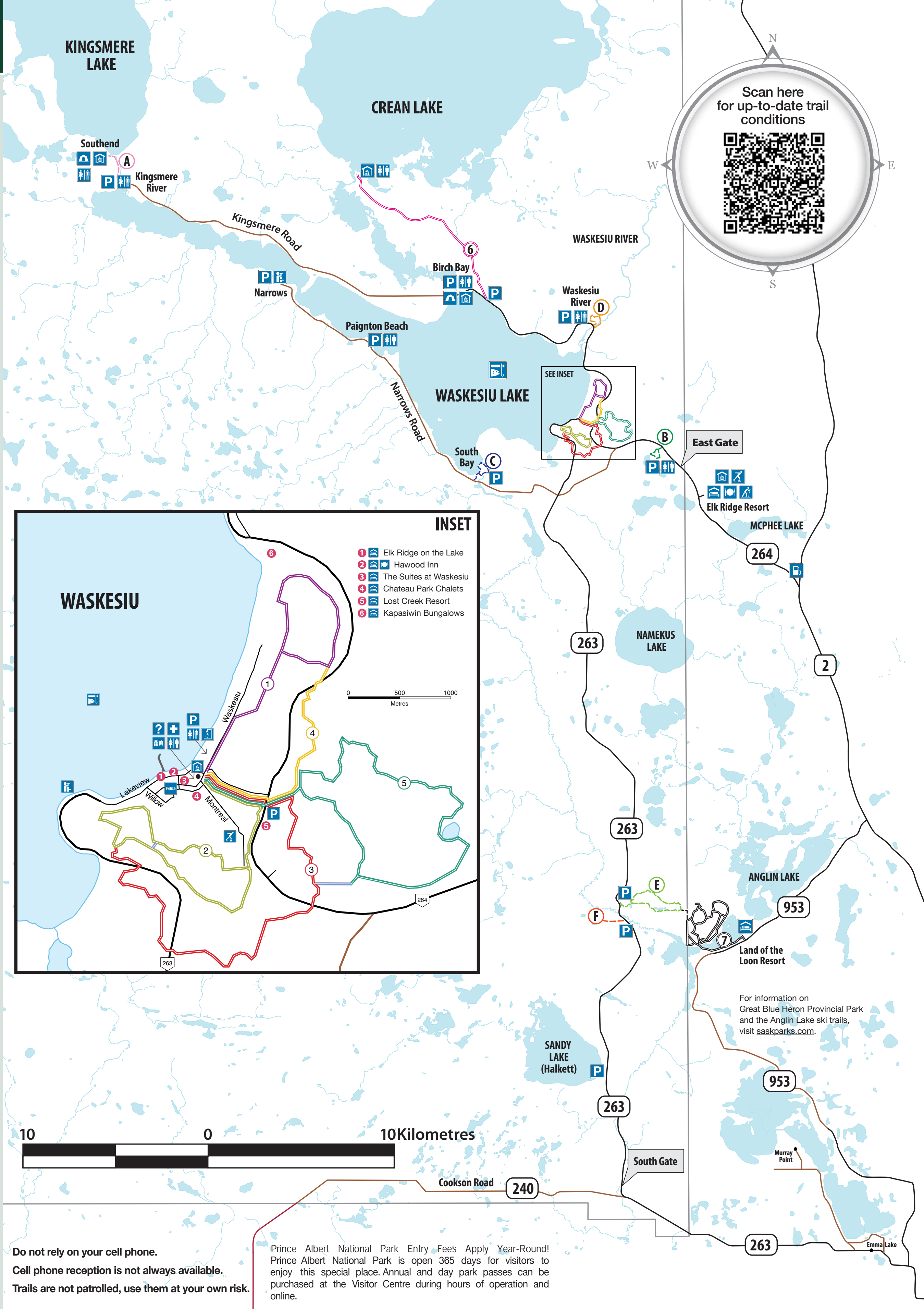
For more information, visit saskparks.com or contact the Great Blue Heron park office at 1-306-982-6250 or greatblueheron@gov.sk.ca.

Snowshoe Trails

- A KINGSMERE RIVER** - 1.5 km one way
- B BOUNDARY BOG** - 2 km loop
- C MUD CREEK TRAIL** - 2 km loop. Access 450m from the Narrows Road.
- D WASKESIU RIVER TRAIL** - 2.5 km loop
- E SPRUCE RIVER HIGHLANDS** - 8.5 km loop, 0.9 km spur to Great Blue Heron Provincial Park ski trails. Note that this is a multi-use trail, and can be used for both snowshoeing and skiing.
- F FREIGHT TAIT SPRINGS TRAIL** - 2 km one way

Visitor Centre: 1-306-663-4522
Emergency: Dial 9-1-1
Parks Canada Dispatch: 1-877-852-3100
Trail Conditions: parks.canada.ca/PANP-trail-conditions

Printed on recycled paper



Do not rely on your cell phone.
Cell phone reception is not always available.
Trails are not patrolled, use them at your own risk.

Prince Albert National Park Entry Fees Apply Year-Round!
Prince Albert National Park is open 365 days for visitors to enjoy this special place. Annual and day park passes can be purchased at the Visitor Centre during hours of operation and online.